



SCR

電熱調整器



SCR

DIGITAL 數位化精密調整

全方位偵錯保護

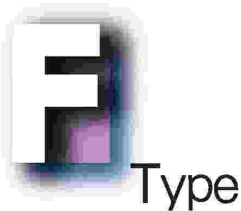
提供加熱設備安全穩定運轉

Heating equipment can operate in safe and stable environment with the protection of digital fine tuning and omni-bearing debugging.

1 ϕ 3 ϕ 50-480VAC 15-750A

三種電力控制模式 There are three power control modes :
1.直線性相位控制 Linear phase control.
2.分配式零位控制 Distributed zero-crossing control.
3.相位啟動零位運轉 Zero-crossing mode with phase-angle start.
(世界首創優異功能 State of the art function, unique invention in the world)

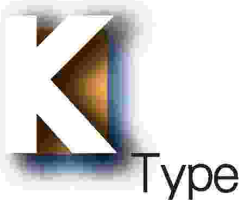
H



精巧型 ▶ Compact Model

DIGITAL 數位精密調整、內附保險絲保護、散熱片超溫保護、智慧型冷卻風扇。

Digital fine tuning, embedded fuse protection, heat sink overheat protection, intellectual cooling fan.



偵錯型 ▶ Debug Model

增加--Thyristor打穿、Fuse熔斷、Heater斷線Heater通過電、Heater低電流...等偵測,及Error Relay接點輸出,提供設備全面性之安全監控。

Detection on -- Thyristor short, fuse broken, heater off-line, heater current overflow and heater current under load is added. Error relay point output is also added. Thus the model provides comprehensive safety monitor on the equipment.



定電流型 ▶ Fixed current Model

增加--定電流回授控制及三相不平衡偵測、Thyristor打穿、Fuse熔斷、Heater斷線、Heater低電流...等偵測,及Error Relay接點輸出,適用於特殊發熱體。

Detection on - Fixed current feedback control, three-phase unbalance detection, detection on Thyristor short, fuse broken, heater off-line, heater current overflow and heater current under load is added. Error relay point output is also added. The fixed current model is used on special heat generators.



電熱調整器



F

F type

FB: 1 φ 1 LEG 1 FUSE/Double Functions:
Zero Crossing / Phase Angle
零位 .相位雙功能

FD: 3 φ 2 LEG 2FUSE / Zero Crossing 零位

FF: 3 φ 3 LEG 3 FUSE/ Zero Crossing 零位

FG: 3 φ 3 LEG 3FUSE / Phase Angle 相位

額定電壓Rated voltage : AC75~530V

額定電流Rated current : 25~750A

輸入訊號及輸出反應速度,可由內建DIP SWITCH自由選擇.

Input signal and output reaction speed. All functions can be selected at will via DIP. switch.



K

K type

KB: 1 φ 1 LEG 1 FUSE/Double Functions:
Zero Crossing / Phase Angle
零位 .相位雙功能

KD: 3 φ 2 LEG 2 FUSE / Zero Crossing 零位

KF: 3 φ 3 LEG 3FUSE / Zero Crossing 零位

額定電壓Rated voltage : AC75~530V

額定電流Rated current : 15~750A

輸入訊號及輸出反應速度,可由內建DIP SWITCH自由選擇.

Input signal and output reaction speed. All functions can be selected at will via DIP. switch.

偵錯功能:Thyristor打穿,Fuse熔斷,Heater斷線, Heater過電流,Heater低電流...等偵測及 Error Relay接點輸出.

Debug Functions : Thyristor short, fuse broken, heater off-line, heater current overflow and Heater current under load is added. Error relay point output is also added.



V

V type

VB: 1 φ 1 LEG 1 FUSE/Double Functions:
Zero Crossing / Phase Angle
零位 .相位雙功能

VG: 3 φ 3 LEG 3 FUSE / Phase Angle 相位

額定電壓Rated voltage : AC75~530V

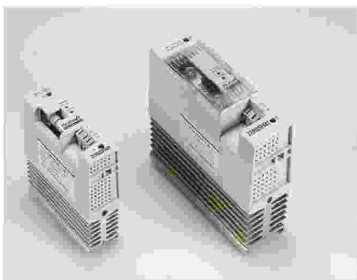
額定電流Rated current : 15~750A

輸入訊號及輸出反應速度,可由內建DIP SWITCH自由選擇.

Input signal and output reaction speed. All functions can be selected at will via DIP. switch.

偵錯功能: 定電流回授控制及三相不平衡偵測Thyristor打穿,Fuse熔斷,Heater斷線, Heater過電流,Heater低電流...等偵測及 Error Relay接點輸出.

Debug Functions : Fixed current feedback control, three-phase unbalance detection, Detection on Thyristor short, fuse broken, heater off-line, heater current overflow and Heater current under load is added. Error relay point output is also added.



S Slim type

適用於射押出機、烘烤爐、實驗爐...及燈光調控

Suitable for the applications on injection molding machines,backing & drying ovens, laboratory furnaces and light control.

電熱調整器Heater Power Regulator

SB: 1 φ 1 LEG 1 FUSE/Double Functions:
Zero Crossing / Phase Angle
零位 .相位雙功能

額定電壓Rated voltage : AC75~530V

額定電流Rated current : 16A,25A,33A,44A,58A

輸入訊號及輸出模式,可由PC板上之 JUMP點改變功能.

Input signal and output modes. There are DIP. SW S1~S8 to switch function on main control PC board.

1. 相位啟動,零位運轉.

Phase angle soft start & Zero cross working.

2. 純相位控制輸出.

Purely phase control output.

固態繼電器 Solid Start Relay

額定電壓	AC50~500V		
額定電流	16A, 25A, 33A, 44A, 58A		
輸入訊號	機型	檔次	電壓範圍
	SV	LV	DC4~8V
		HV	DC8~30V
	SW	HV	AC70~140V
HV		AC140~280V	